



NeuBoat Dock

360° SURROUND-VIEW
SITUATIONAL AWARENESS

www.avikus.ai



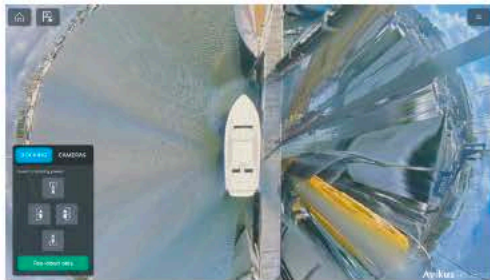
Situational Awareness for Docking

NeuBoat Dock offers a stress-free docking experience, providing situational awareness for both novice and seasoned boaters. Upon approaching the dock, captains can easily access the "Avikus Dock" feature on the Axiom chartplotter. With six discreet fish-eye cameras strategically placed around the hull, real-time feeds offer captains a clear view of the boat's movements and proximity to the dock.

Compatible Boats: Designed for vessels in the 50' (15 meters) range.

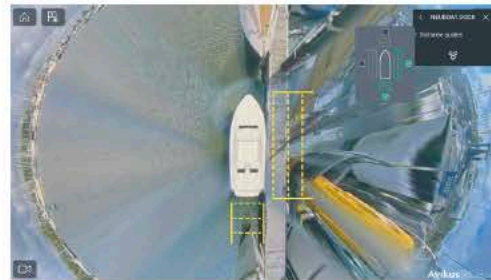
Compatible MFDs: Raymarine Axiom chartplotters.

Calibration: Can be performed on land or in the water, without cumbersome calibration mats or post used in other systems.



Top-down view

360° bird's eye perspective view.



Distance guide view

Shows distance to dock in 1-meter increments.
Can be toggled on or off.



Single camera view

(image depicts stern view)



All camera view

Left side presents a top-down view, while the right features all six individual camera views.

NAVIGATE WITH CONFIDENCE. ARRIVE SAFELY.

System Overview



**SURROUND-VIEW
MONITOR CAMERAS**



**CAMERA
CONVERSION UNIT**



**OBJECT
RECOGNITION UNIT**

PHYSICAL SPECIFICATION

Width	90 mm (3.54 in).	225.79 mm (8.89 in).	248.20 mm (9.77 in).
Height	89.79 mm (3.54 in).	180.00 mm (7.09 in).	187.00 mm (7.36 in).
Depth	97.81 mm (3.85 in).	30.00 mm (1.18 in).	169.00 mm (6.65 in).

POWER SPECIFICATION

Nominal supply voltage	5 V dc	12 V / 24 V dc	12 V / 24 V dc
Operating voltage range	4.5 V to 5.5 V dc	10.8 V to 32 V dc	10.8 V to 32 V dc
Power consumption	1.4 W (maximum)	25 W (maximum)	45 W (maximum)
Current	240 mA (nominal) @ 5 V dc	2.1 A (nominal) @ 12 V dc / 1.0 A (nominal) @ 24 V dc	1.5 A (nominal) @ 12 V dc / 0.9 A (nominal) @ 24 V dc

ENVIRONMENTAL SPECIFICATION

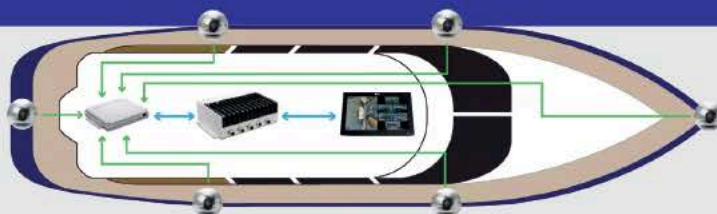
Operating temperature	-30°C (-22°F) to +75°C (+167°F)	-30°C (-22°F) to +75°C (+167°F)	-15°C (+5°F) to +55°C (131°F)
Storage temperature	-40°C (-40°F) to +85°C (+185°F)	-40°C (-40°F) to +85°C (+185°F)	-30°C (22°F) to +70°C (158°F)
Relative humidity	Up to 90% @ 40°C (104°F)	Up to 90% @ 40°C (104°F)	Up to 93% @ 40°C (104°F)
Waterproof rating	IPx7	IPx7	IPx6

CONFORMANCE

Europe, Australia & New Zealand	EN 60945:2002
USA	CFR47 Part 15
Canada	ICES-003
Product markings	UKCA, CE, RCM, FCC, ICES, WEEE

SYSTEM DIAGRAM

The complete system consists of 6 Surround-View Monitor cameras, Object Recognition Unit and the Camera Control Unit connected seamlessly to an Axiom Chartplotter display at the helm.





Avikus
MARITIME AUTONOMOUS PIONEER



www.avikus.ai

Contact us at sales@avikus.ai

NAVIGATE WITH CONFIDENCE. ARRIVE SAFELY.

